

# Burke-Gilman Trail Missing Link Project



The Levy to  
**MOVE SEATTLE**  


**Design Advisory Committee Meeting #6**  
September 28, 2017



**Seattle**  
Department of  
Transportation

# Agenda

Time	Item
2:30 – 2:45 PM	Introductions
2:45 – 4:00 PM	Design updates
4:00 – 4:15 PM	Corridor outreach updates
4:15 – 4:20 PM	Public comment
4:20 – 4:30 PM	Wrap up
4:30 p.m.	Adjourn

# Design Updates



**Seattle**  
Department of  
Transportation

# PROJECT SEGMENTS



**SEGMENT 1**

**NW 54TH ST & NW MARKET ST**



# NW 54TH ST (EXISTING)





# NW MARKET ST (EXISTING)



# CHANGES BETWEEN EIS AND 30%



1. Maintain bus/metro layover zones along 54th St at the Ballard Locks
2. Relocated bus stop at Market St / 28th
3. Added westbound left turn lane with protected signal phase at Market / 28<sup>th</sup>
4. Coordinated trail design with Nordic Heritage Museum (video)
5. Substituted concrete for asphalt along NW Market St portion of the trail



# CHANGES BETWEEN 30% AND 60% DESIGN



1. Restriped parking at the Ballard Locks and the Lockspot Café
2. Added mixing zone treatments at the Ballard Locks
3. Added low maintenance street trees at multiple locations
4. Improved connections to the Neighborhood Greenway at 28<sup>th</sup> / Market
5. Converted 26th to one-way south of Market St
6. Reconfigured 24th / Market intersection, modified sidewalk cafes, and added mixing zone
7. Extended bicycle lanes on 24th to Market St and added crossing treatments

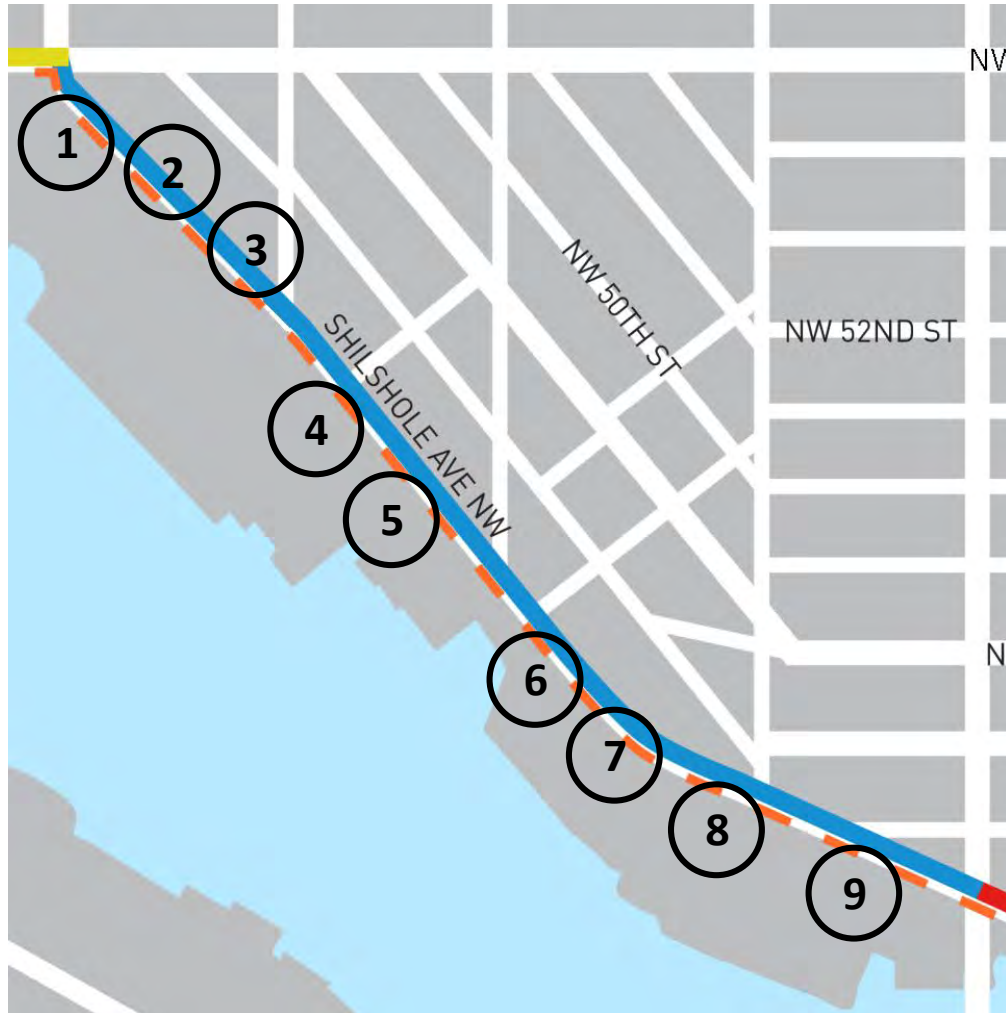
**SEGMENT 2**  
**SHILSHOLE AVE NW**

# SHILSHOLE (EXISTING)



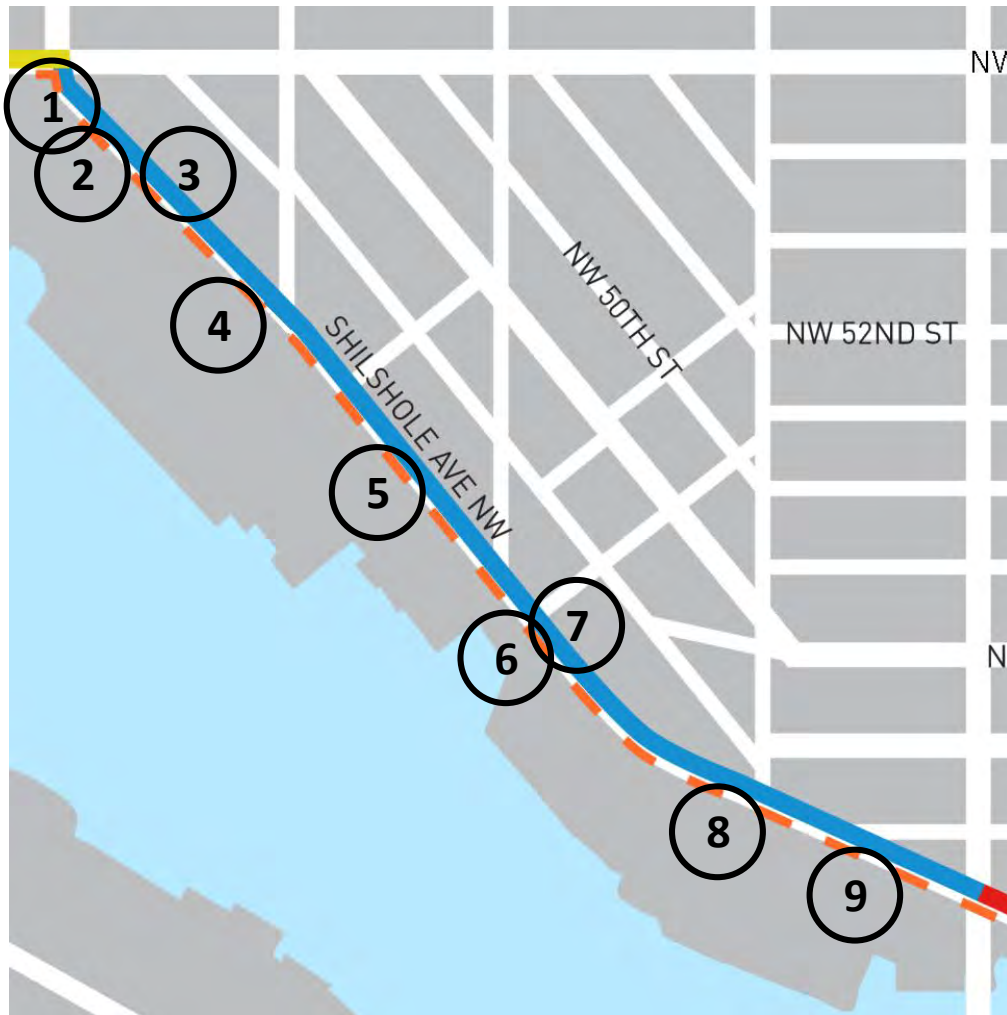


# CHANGES BETWEEN EIS AND 30%



1. Extended 54th and converted 24th to a dead end
2. Extended left turn pocket on Shilshole
3. Added striped parking to the northside of Shilshole Ave NW
4. Added signal to Shilshole / Vernon
5. Incorporated LED signs at key locations along Shilshole
6. Maintained staging and parking space south of the trail on Shilshole Ave NW
7. Added left turn pocket at 17th and Shilshole
8. Avoided drainage impacts on nearby properties
9. Improved and widened rail crossing for cyclists

# CHANGES BETWEEN 30% AND 60% DESIGN



1. Added landscape terrace at 24th / Shilshole
2. Added perpendicular parking along 24th
3. Added rapid flash beacons and crosswalk at 54th / Shilshole
4. Added low maintenance street trees at multiple locations
5. Added truck aprons for WB67 truck movements at multiple locations
6. Extended sidewalk and landscaping at 20th Street End
7. Installed crosswalks and a half-signal at Dock / Shilshole
8. Redesigned 17th / Shilshole for truck turning movements
9. Added lighting, fencing, and signage at trail/railroad crossing

**SEGMENT 3**  
**NW 45TH ST**



# NW 45TH ST (EXISTING)



# CHANGES BETWEEN EIS AND 30%



1. Increased lane width to 11 feet on 45th St to accommodate large trucks
2. Retained loading access for properties on the south side of 45th between 11th and 14th

# CHANGES BETWEEN 30% AND 60%



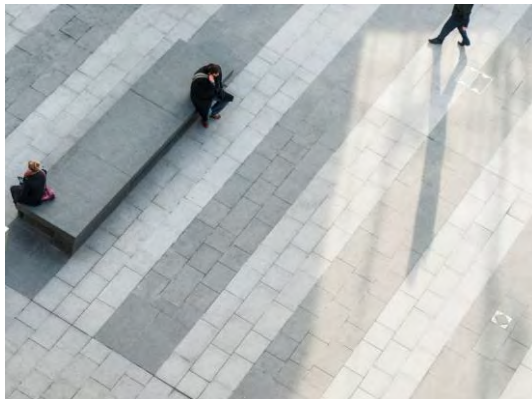
1. Connected the trail to the existing King County bike lane including new crosswalks, rapid flash beacons, and pedestrian lights
2. Restriped parking on the south side of 45th between 11th and 14th
3. Coordinated with Ballard Blocks 2 project
4. Added low maintenance street trees at multiple locations
5. Coordinated with SPU Ship Canal Water Quality Project



**60% DESIGN  
CORRIDOR BENEFITS**



## Pedestrians



- New sidewalks and crosswalks on 45<sup>th</sup> and Shilshole
- Improved sidewalks on Market and 54th
- New rapid flashing beacons
- LED alert signage at key crossings along Shilshole
- Pavement treatments to highlight areas where pedestrians and bikes mix



## Trucks



- Enhanced connections to 54th
- Mountable aprons to help facilitate wide turns at key intersections and driveways
- Left turn pocket and realigned lanes at 17th
- LED alert signage at key crossings along Shilshole
- Enhanced predictability at corridor intersections and crossings





## Cars



- Rechannelized Market St to include center turn lane
- Traffic signal additions and enhancements to improve safety and traffic flow
- Enhancements to maximize parking and allow safer back-in movements
- Added turn pockets along Shilshole to provide better traffic flow



## Bicycles



- Enhanced connections to Neighborhood Greenways and bicycle lanes
- Crossing improvements (including bike crossing signals and bike boxes) at key intersections
- LED alert signage at key trail crossings along Shilshole
- Pavement treatments to highlight areas where bikes and pedestrians mix



## Safety



- Create a more predictable corridor for all users
- Enhance pedestrian and bike crossings at key corridor locations
- Implement signs and other design treatments to alert corridor users of one another
- Improve key intersections to help trucks make turns



**REVIEW ROLLPLOT DRAWINGS**

# Corridor Outreach Update



# DAC Work Plan

Meeting	Updated Schedule
<b>DAC Meeting #6 &amp; All-Segment Workshop</b>	<ul style="list-style-type: none"><li>• DAC, 2-4 PM</li><li>• Workshop, 4:30-6:30 PM</li></ul>
<b>Field Test</b>	<b>October 2 (3 – 6 PM)</b>
<b>Public Event</b>	<b>October 12</b>
<b>Self-guided Public Walking Tour</b>	<b>October 14</b>
<b>DAC Meeting #7</b>	<b>October 26</b>
<b>DAC Meeting #8</b>	<b>November 16</b>
<b>DAC Meeting #9</b>	<b>January 11, 2018</b>
<b>Public Event #3</b>	<b>January 18</b>
<b>DAC Meeting #10</b>	<b>February 1</b>



# Upcoming DAC & Public Events

August						
S	M	T	W	T	F	S
		1	2	3	4	5
6	7	8	9	10	11	12
13	14	15	16	17	18	19
20	21	22	23	24	25	26
27	28	29	30	31		

September						
S	M	T	W	T	F	S
					1	2
3	4	5	6	7	8	9
10	11	12	13	14	15	16
17	18	19	20	21	22	23
24	25	26	27	28	29	30

October						
S	M	T	W	T	F	S
1	2	3	4	5	6	7
8	9	10	11	12	13	14
15	16	17	18	19	20	21
22	23	24	25	26	27	28
29	30	31				

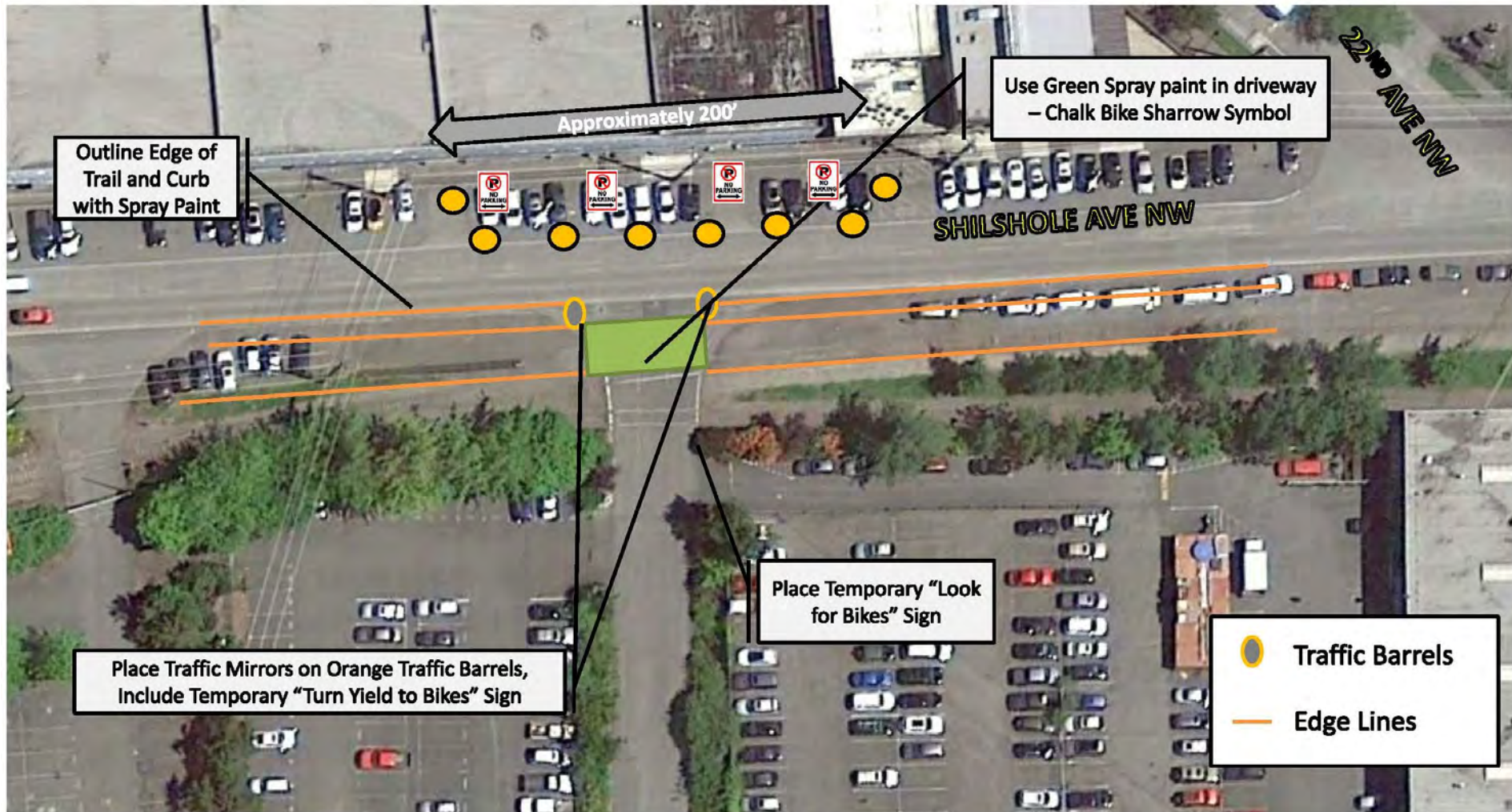
November						
S	M	T	W	T	F	S
			1	2	3	4
5	6	7	8	9	10	11
12	13	14	15	16	17	18
19	20	21	22	23	24	25
26	27	28	29	30		

December						
S	M	T	W	T	F	S
					1	2
3	4	5	6	7	8	9
10	11	12	13	14	15	16
17	18	19	20	21	22	23
24	25	26	27	28	29	30
31						

January 2018						
S	M	T	W	T	F	S
	1	2	3	4	5	6
7	8	9	10	11	12	13
14	15	16	17	18	19	20
21	22	23	24	25	26	27
28	29	30	31	1	2	3

	<b>DAC Event</b>
	<b>Segment Workshop</b>
	<b>Public Event</b>
	<b>Online open house</b>

# October 2 – Field Test









# Public Comment

**Wrap-up/  
Next Steps**

# Thank you!

[louisa.galassini@seattle.gov](mailto:louisa.galassini@seattle.gov) | (206) 615-0185

[www.seattle.gov/transportation/BGT\\_MissingLink.htm](http://www.seattle.gov/transportation/BGT_MissingLink.htm)

[www.seattle.gov/transportation](http://www.seattle.gov/transportation)

